

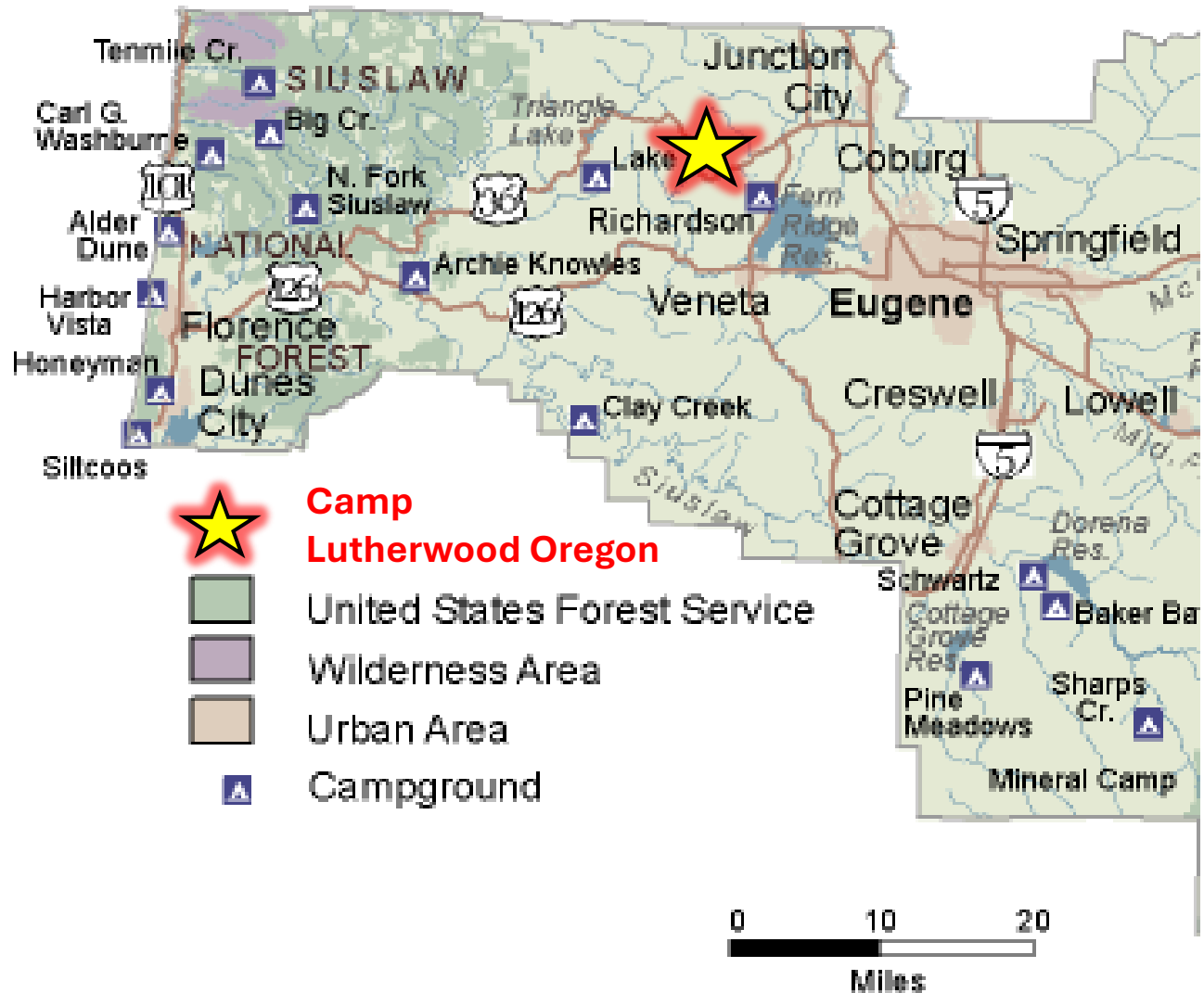


## Camp Lutherwood Oregon

22960 Highway 36 Cheshire, OR 97419

[www.lutherwoodoregon.org/](http://www.lutherwoodoregon.org/)

Emergency phone: 541-998-6444



### Directions from...

1. Portland, Salem, Albany, and the I-5 corridor in between.
2. The Dalles, east Portland Metro, and in between
3. The Coast north and south of Lincoln City
4. West Salem
5. Corvallis, Monmouth, McMinnville.
6. The Coast a. Newport to b. Waldport
7. Eugene Friends Meeting House
8. Springfield and Eugene North, South, East
9. The Coast Florence Area
10. Bend area
11. Southern Oregon, Ashland, Medford, Roseburg
12. Custom Directions – Map Link

See next pages.



**Camp Lutherwood Oregon**  
22960 Highway 36 Cheshire, OR 97419

[www.lutherwoodoregon.org/](http://www.lutherwoodoregon.org/)  
Emergency phone: [541-998-6444](tel:541-998-6444)

## **DIRECTIONS**

Friends, we have done our best to copy these directions correctly from the Google map indicators. They are not infallible. You will be wise to **use option #12** to look up the best route from your starting point, **or at least to check these directions**. And please let us know if you find errors or confusions.

Approaching the entrance to Camp Lutherwood you may lose the phone signal. We suggest you **print the instructions for the last few miles along Hwy 36**. And note the emergency number for Lutherwood at the top of this page.

Lutherwood's address is just the number on its mailbox. Use the landmark of Alderwood State Wayside, which is 1 west of Lutherwood.

### **1. From Portland, Salem, Albany, and the I-5 corridor in between.**

Take I-5 South. Take exit 216 west toward Halsey/Brownsville. In 0.2 mile, turn right on OR-228 to Halsey. At 2<sup>nd</sup> St. turn left onto OR-99E southbound to Harrisburg. In 13 miles, at the south end of Harrisburg, Hwy 99E (3<sup>rd</sup> St) curves right across the river and goes through Junction City, where 99E becomes Hwy 99. About 0.5 mile south of JC, turn right on Hwy OR-36. Continue 14.6 miles through Cheshire and Golden to Lutherwood. Turn left and park near office or in the parking lot to the left. [Landmark: at milepost 38 you pass a small State wayside Alderwood. Lutherwood is 1 mile beyond.] (Distance and time: From Multnomah FMH 120 miles, 2hr 20 min; from Salem 73 miles, 1hr 25 min From Albany 48 miles, 1hr 5 min.)

**Quicker**, simpler route from **Albany**. Take Hwy 20 to 2<sup>nd</sup> Street in Corvallis. At the first stoplight (Harrison Avenue), turn right, then left to join 4<sup>th</sup> St. Follow the directions from Corvallis, #4 below.

### **2. From the Dalles, east Portland suburbs, and in between.** Take I-84 west to I-5 south (or I-205 to I-5). Then follow the directions from Portland above. (3hr 30 min from the Dalles; 2hr 30min from Gresham or Camas)

### **3. From the Coast north of Lincoln City.** Connect to HWY 22 east via 101 or 18, whichever is closest. Follow 22 east. Take the exit to Rickreall, Hwy 99W southbound toward Monmouth/Corvallis. Take 99W to Corvallis, then follow the directions from Corvallis, #5 below. (Distance and time: from Neskowin area 113 miles, 2 hrs 20 min; From Lincoln City 105 miles, 2hr 10 min)



Camp Lutherwood Oregon

[22960 Highway 36](https://www.lutherwoodoregon.org/) [Cheshire, OR 97419](https://www.lutherwoodoregon.org/)

[www.lutherwoodoregon.org/](https://www.lutherwoodoregon.org/)

Emergency phone: [541-998-6444](tel:541-998-6444)

**From the Coast Lincoln Beach/Depot Bay.** Take Hwy 101 or OR-229 to Hwy 20 in Newport. Then follow the instructions from Newport, #6 below.

4. **From West Salem.** Take Hwy 22 West to Hwy 51 through Independence or Monmouth to Corvallis. In Corvallis, make sure you are on 4<sup>th</sup> St. going south through town. Then follow the directions from Corvallis, #5 below. (70 miles, 1 hr 30 min)  
Or take Hwy 22 East through Salem to I-5. Then follow the directions from Salem, #1 above. (75 miles, 1 hr 30 min)
  5. **From Corvallis, Monmouth, McMinnville.** Follow Hwy 99W south through Corvallis (which is 4<sup>th</sup> St. through downtown) and across the river. Continue 17 miles to Monroe. At the south edge of town, turn right at the curve onto Territorial Road - before crossing the bridge. Go 8 miles to the T-Junction. Turn right on Hwy 36 for 8 miles. At milepost 38 there is a state wayside, Alderwood. Continue 1 more mile. Camp Lutherwood will be on the left. Park near the gate or adjacent graveled area. (From Corvallis 37 miles, 46 min; From Rickreall 63 miles, 1hr 21 min; From McMinnville 83 miles, 1hr 47 min.)
  6. **a. From the Coast Newport area.** Take Hwy 20 East toward Philomath. In 42 miles, turn right on OR-34 toward Alsea. In 0.5 mile, turn left on Grange Rd. In 1.3 mile, turn right on Fern Rd. In 2.5 mile, turn left on SW Airport Ave. In 1.2 miles turn right on Belfontaine Rd. In 2.8 mile, turn left on Greenberry Rd. In 3.1 miles, turn right on OR-99W southbound. Go 12 miles through Monroe. At the south edge of town, turn right at the curve onto Territorial Road - before crossing the bridge. Go 8 miles to the T-Junction. Turn right on Hwy 36 for 8 miles. At milepost 38 there is a state wayside, Alderwood. Continue 1 more mile. Camp Lutherwood will be on the left. Park near the office or adjacent graveled area. (1hr 34 min).
- Alternate:** Continue on Hwy 20 after it merges with Hwy 34 through Philomath and Corvallis to the exit to 99W southbound Then follow the directions from Corvallis, #5 above. **Alert: Traffic delays are long on Highway 20 between Philomath and Corvallis,** especially on Friday afternoon. The back route is quicker.
- 6 **b. From the Coast Waldport area. Easiest:** Take HWY 101 to Florence and follow the directions from Florence, #9 below. (1hr 43 min), Of course, there is the....

**Most adventurous route:** overland from Waldport through Tidewater and Blachly. (1hr 41 min!!) \*

<https://www.google.com/maps/dir/Waldport,+OR/Camp+Lutherwood+Oregon,+9741,+22960+OR-36,+Cheshire,+OR+97419/@44.2323758,->



[124.0312748,10z/am=t/data=!4m14!4m13!1m5!1m1!1s0x54c1c6d40a8a48c9:0x94c03b4f81910b49!2m2!1d-](https://www.google.com/maps/dir/124.0312748,10z/am=t/data=!4m14!4m13!1m5!1m1!1s0x54c1c6d40a8a48c9:0x94c03b4f81910b49!2m2!1d-)

[124.0687302!2d44.426786!1m5!1m1!1s0x54c107afc3d49199:0x374ab60ea5fd4beb!2m2!1d-123.4396438!2d44.164524!3e0?authuser=0&entry=ttu&g\\_ep=EgoyMDI1MDQwNi4wLWlKXMDSoJLDEwMjExNDU1SAFQAw%3D%3D](https://www.google.com/maps/dir/124.0687302!2d44.426786!1m5!1m1!1s0x54c107afc3d49199:0x374ab60ea5fd4beb!2m2!1d-123.4396438!2d44.164524!3e0?authuser=0&entry=ttu&g_ep=EgoyMDI1MDQwNi4wLWlKXMDSoJLDEwMjExNDU1SAFQAw%3D%3D)

7. **From Eugene Friends Meeting House.** There are shorter routes that go around the east and north sides of Fern Lake Reservoir on Clear Lake Road. See the route from Springfield below. **Most direct:** Take 18<sup>th</sup> Avenue West to Bailey Hill Road, turn right, then left onto 11<sup>th</sup> Avenue West (Hwy 126). At Veneta, turn right on Territorial Highway. Go 4.8 miles, then turn left on Lawrence Road. Go 3.8 miles, then turn left on Hwy 36. Go 5.2 miles to Lutherwood. Turn left and park near office or in the parking lot to the left. [Landmark: at milepost 38 you pass a small State wayside park. Lutherwood is 1 mile beyond]. (26 miles from EFMH; 42 min)
  
8. **From Springfield and Eugene North, South, East.** Follow I-5 north, I-105 north or your normal route to westbound Hwy 569, Randy Pape Beltline. Take exit 7A. In 0.3 mile, turn right on Prairie Road. In 0.2 mile, turn left on Irving St. In 0.5 mile it becomes Clear Lake Rd. Go straight. Continue 8.4 miles around Fern Ridge Reservoir. At the junction with Territorial Hwy., go straight. Clear Lake becomes Lawrence Road. Continue 3.8 miles, then turn left on Hwy 36. Go 5.2 miles to Lutherwood. Turn left and park near office or in the adjacent gravel area. [Landmark: at milepost 38 you pass a small State wayside park. Lutherwood is 1 mile beyond.]
  
9. **From Oregon Coast Florence Area. Quickest:** Take Hwy OR-126 east. 14 miles (Mapleton) turn right to stay on Hwy 126. In 26.5 miles, turn left on Poodle Creek Rd. In 6.7 miles, turn left on Hwy OR-36 west. In 2.0 miles, turn left into Lutherwood Park near the office or adjacent graveled area. (57 min from Florence). Of course, there is the...

**More adventurous route around Triangle Lake (1hr 7 min) \***

<https://www.google.com/maps/dir/Florence,+Oregon+97439/Camp+Lutherwood+Oregon,+9741,+22960+OR-36,+Cheshire,+OR+97419/@44.0855865,->

[123.9263959,11z/am=t/data=!4m15!4m14!1m5!1m1!1s0x54c180058c644705:0xdb06c064b0233adc!2m2!1d-](https://www.google.com/maps/dir/123.9263959,11z/am=t/data=!4m15!4m14!1m5!1m1!1s0x54c180058c644705:0xdb06c064b0233adc!2m2!1d-)

[124.099841!2d43.9826214!1m5!1m1!1s0x54c107afc3d49199:0x374ab60ea5fd4beb!2m2!1d-123.4396438!2d44.164524!3e0!5i1?authuser=0&entry=ttu&g\\_ep=EgoyMDI1MDQwNi4wLWlKXMDSoJLDEwMjExNDU1SAFQAw%3D%3D](https://www.google.com/maps/dir/124.099841!2d43.9826214!1m5!1m1!1s0x54c107afc3d49199:0x374ab60ea5fd4beb!2m2!1d-123.4396438!2d44.164524!3e0!5i1?authuser=0&entry=ttu&g_ep=EgoyMDI1MDQwNi4wLWlKXMDSoJLDEwMjExNDU1SAFQAw%3D%3D)

10. **From Bend. Quickest:** Take Hwy 20 west to Hwy OR-126 West to Eugene. Take Exit 4B onto I-5 North. In less than 1 mile, take exit 195B onto westbound Randy Pape Beltway



Camp Lutherwood Oregon

22960 Highway 36 Cheshire, OR 97419

[www.lutherwoodoregon.org/](http://www.lutherwoodoregon.org/)

Emergency phone: [541-998-6444](tel:541-998-6444)

(Hwy 569). Take exit 7A for Prairie Rd. In 0.2 mile, turn left on Irving St. In 0.5 mile it becomes Clear Lake Rd. Go straight. Continue 8.4 miles around Fern Ridge Reservoir. At the junction with Territorial Rd, Clear Lake becomes Lawrence Road. Go straight. Continue 3.8 miles, then turn left on Hwy 36. Go 5.2 miles to Lutherwood. Turn left and park near office or in the parking lot to the left. [Landmark: at milepost 38 you pass a small State wayside park. Lutherwood is 1 mile beyond.] (3 hours)

11. **From Southern Oregon, Ashland, Medford, Roseburg.** Take I-5 North. Take exit 195B onto westbound Rande Pape Beltway (Hwy 569). Take exit 7A for Prairie Rd. In 0.2 mile, turn left on Irving St. In 0.5 mile it becomes Clear Lake Rd. Go straight. Continue 8.4 miles around Fern Ridge Reservoir. At the junction with Territorial Rd., it becomes Lawrence Road. Go straight. Continue 3.8 miles, then turn left on Hwy 36. Go 5.2 miles to Lutherwood. Turn left and park near office or in the parking lot to the left. [Landmark: at milepost 38 you pass a small State wayside park. Lutherwood is 1 mile beyond.] (203 miles; 3hr 20 min from Ashland)

**Alternate route from Southern Oregon. 15 miles shorter, 10 minutes quicker,** much more scenic, but more 2-lane road. Take I-5 North to exit 162 for OR-38 toward Drain/Elkton. In 1 mile turn right on Curtain Rd. Go 1.2 miles. At the “Y,” take the slight left on Territorial Hwy. Go 9 miles, then turn right to stay on Territorial Hwy. In 23 miles, turn left on Lawrence Rd. Continue 3.8 miles, then turn left on Hwy 36. Go 5.2 miles to Lutherwood. Turn left and park near office or in the parking lot to the left. [Landmark: at milepost 38 you pass Alderwood state wayside. Lutherwood is 1 mile beyond.] (189 miles; 3hr 10 min.)

12. **Custom Directions. This link** will take you to the Google map of Lutherwood. \*

Then enter your starting point.

[https://www.google.com/maps/dir//Camp+Lutherwood+Oregon,+9741,+22960+OR-36,+Cheshire,+OR+97419/@44.164524,-123.4396438,17z/data=!4m9!4m8!1m0!1m5!1m1!1s0x54c107afc3d49199:0x374ab60ea5fd4beb!2m2!1d-123.4396438!2d44.164524!3e0?entry=ttu&g\\_ep=EgoyMDI1MDQwMi4xIKXMDSoJLDEwMjExNDU1SAFQAw%3D%3D](https://www.google.com/maps/dir//Camp+Lutherwood+Oregon,+9741,+22960+OR-36,+Cheshire,+OR+97419/@44.164524,-123.4396438,17z/data=!4m9!4m8!1m0!1m5!1m1!1s0x54c107afc3d49199:0x374ab60ea5fd4beb!2m2!1d-123.4396438!2d44.164524!3e0?entry=ttu&g_ep=EgoyMDI1MDQwMi4xIKXMDSoJLDEwMjExNDU1SAFQAw%3D%3D)

\* Windows users. Hover your mouse over the link above. It will say to hold down your ‘ctrl’ key and click on the link at the same time. (i-pad and mac users, follow the instructions for your device.)

All users. When the route appears, click on “Details” below the route, e.g. I-5, Hwy 36, and then on the “>” for each section of the itinerary to see the detailed steps.